



LIFEWAY WOMEN'S

TRUSTWORTHY



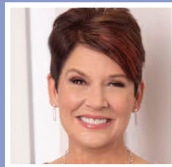
"The instruction of the Lord is perfect, renewing one's life; the testimony of the Lord is trustworthy, making the inexperienced wise."
- Psalm 19:7

LEADERSHIP FORUM

EQUIPPING EVERY WOMAN
FOR GOD'S CALL

NASHVILLE, TN • LONG HOLLOW CHURCH

LIVE! NOVEMBER 6-7, 2025



Featuring: Ruth Chou Simons, Jennifer Rothschild, Dr. Sarita Lyons, Dr. Jeff Iorg, Courtney Doctor

SPONSORSHIP OPPORTUNITIES

Lifeway's Women's Leadership Forum is Lifeway's most important event of the year for Women's Ministry leaders and for women who lead in the marketplace. These leaders are professionals and volunteers who hold leadership positions and women who serve as the decision makers for their church's women's ministry. Your sponsorship and participation will give you the opportunity to reach this target group in a direct, powerful, and creative way. Learn more about the Women's Forum at lifeway.com/womensforum

PROJECTED ATTENDANCE: 1000+ WOMEN IN LEADERSHIP

- Attendee average age is 30-55
- Attendees come from all across the United States (34+ states)
- Attendees represent churches ranging in size from average attendance of 150 in worship to 3000 in worship with the average size being 650 in attendance
- Multiple denominations represented
- Audience is made up of leaders who are influencers and decision makers for their churches, and women who lead in the marketplace

NOVEMBER 6-7, 2025

NASHVILLE, TN • LONG HOLLOW CHURCH

**LIFEWAY
WOMEN'S**

**LEADERSHIP
FORUM**

SPONSORSHIP OPPORTUNITIES

EXHIBITOR \$750

BENEFITS INCLUDE:

- One complimentary conference registration to the live event
- Exhibitor listing in printed event program
- Exhibit Table (1 - 8ft table) - includes electricity, 2 chairs, and Wi-Fi access
- Email blast that connects attendees to your website
- One exhibitor badge. *Additional badge may be purchased for \$50/each
(Sponsor to bring one representative on-site to run table and share your story)
- Mention in post-event "Thank You" email to attendees

SILVER \$1,500

BENEFITS INCLUDE EXHIBITOR LEVEL, PLUS:

- One additional complimentary conference registration to the live event
- Logo in Sponsor Thank You media show
- Half-page ad in printed event program
- One additional exhibitor badge (For a total of 2 badges.) *Additional badge may be purchased for \$50/each

PLATINUM \$3,000

BENEFITS INCLUDE EXHIBITOR AND SILVER LEVEL, PLUS:

- Two additional complimentary conference registrations to the live event
- Reserved seating for four Sponsor Representatives attending the event
- Additional exhibit booth (2 - 8ft tables) - includes electricity, 4 chairs, and Wi-Fi access
- Platform recognition during announcements
- Opportunity to show promotional video in General Session - maximum of 2-3 minutes in length
- Inclusion of logo and link to your website on lifeway.com
- Platform recognition during announcements
- One page ad in printed event program

PREMIER PLATINUM (Inquire for details)



2025 EXHIBITOR APPLICATION FORM

A limited number of sponsorships will be available for this premiere event.

COMPANY INFORMATION

Company Name:

Street Address:

State: Zip: Phone #:

Name of Representative:

Contact number for Representative:

E-Mail Contact:

SPONSORSHIP LEVELS:*

☐ PLATINUM SPONSOR (\$3,000) ☐ SILVER SPONSOR (\$1,500) ☐ EXHIBITOR (\$750)

*All sponsors and sponsor opportunities are based on approval of Lifeway Women Events

ADDITIONAL OPPORTUNITIES: *(Excludes Exhibitor Level)*

☐ SPONSOR A BREAK (\$1,500) ☐ GIFT INSERT* (\$1,000)
☐ PRINT COLLATERAL* (\$500) ☐ GIVEAWAY FOR DRAWINGS* (\$250)

*Subject to approval

TOTAL:

We must receive your program ad no later than August 1, 2025.

Please send to taylor.owens@lifeway.com

Please return this completed form to:
Taylor Owens • taylor.owens@lifeway.com

Once we receive your form indicating your participation, we will send you an invoice for the appropriate amount of money due.